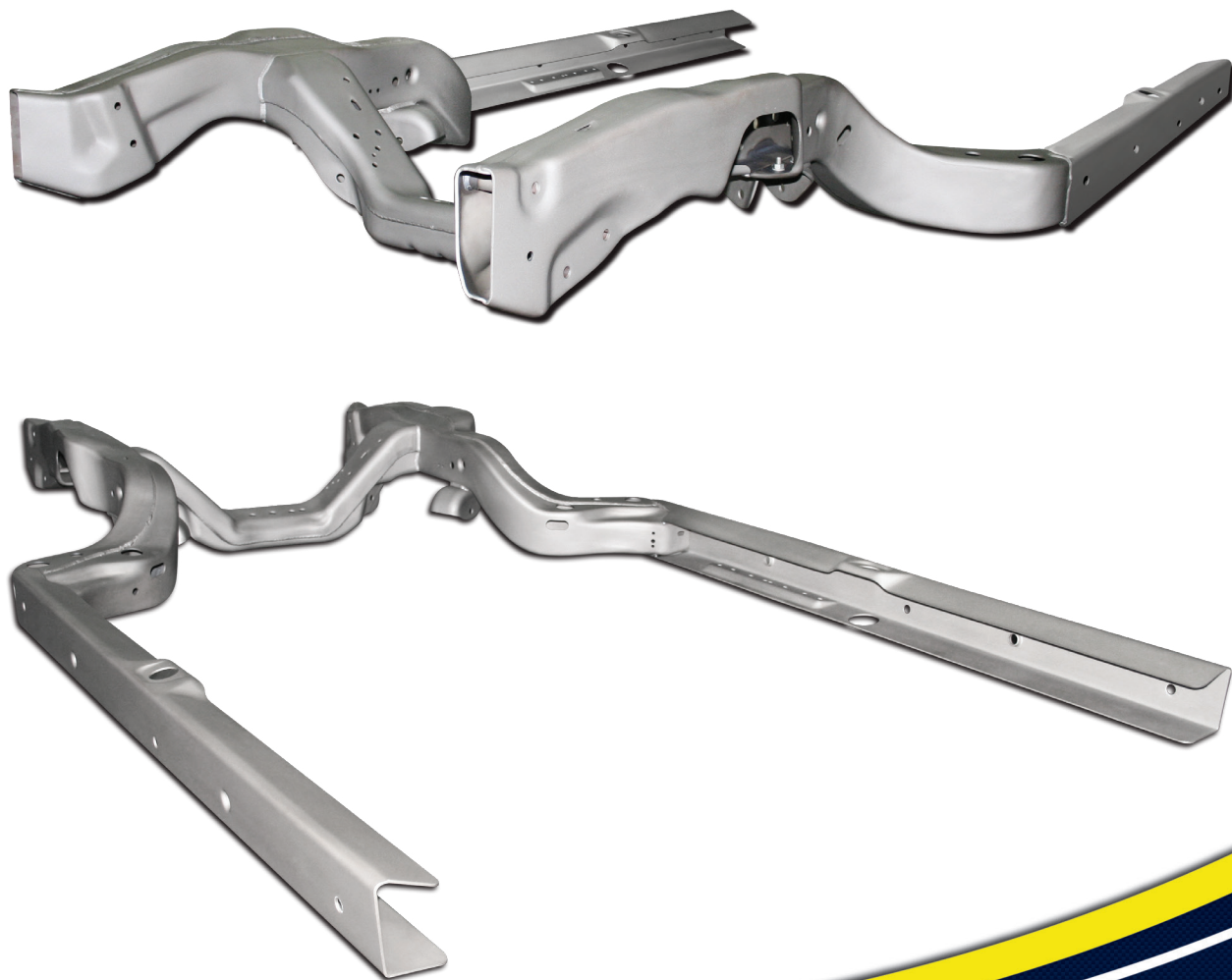




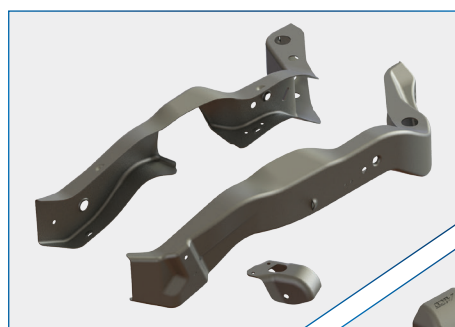
1968-1972 CHEVELLE REPLACEMENT FRAME KIT PART #40000

Thank you for purchasing an AFCO '68-'72 Chevelle Replacement Frame Kit. The AFCO Frame Kit is engineered for racing and follows OEM specifications. The kit design allows chassis builders to reduce their build time by over 50%. In testing, AFCO found that it takes significantly less time to build this frame kit than utilizing an OEM chassis. AFCO is the first in the industry to offer crash replacement frame components. Please see the part number list on the reverse side of this document. All of the components are manufactured from the highest quality materials and quality control checked.

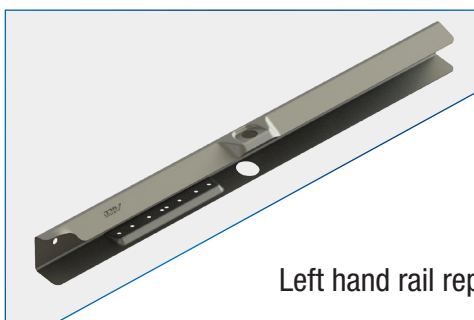




1968-1972 CHEVELLE REPLACEMENT FRAME KIT PART #40000



40015
Right hand frame horn
replacement kit.



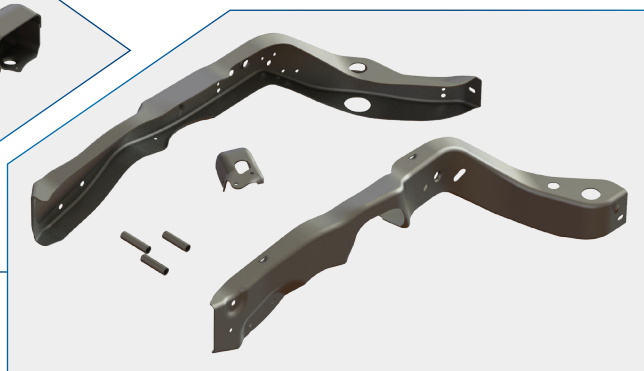
40017 Right hand rail
replacement kit.



40018
Left hand rail replacement kit.



40014 Cross member
replacement kit.



40016
Left hand frame horn replacement kit.

Available Crash Replacement Kits

PART DESCRIPTION	PART #
CROSS MEMBER REPLACEMENT KIT	40014
RH FRAME HORN REPLACEMENT KIT	40015
LH FRAME HORN REPLACEMENT KIT	40016
RH RAIL REPLACEMENT KIT	40017
LH RAIL REPLACEMENT KIT	40018