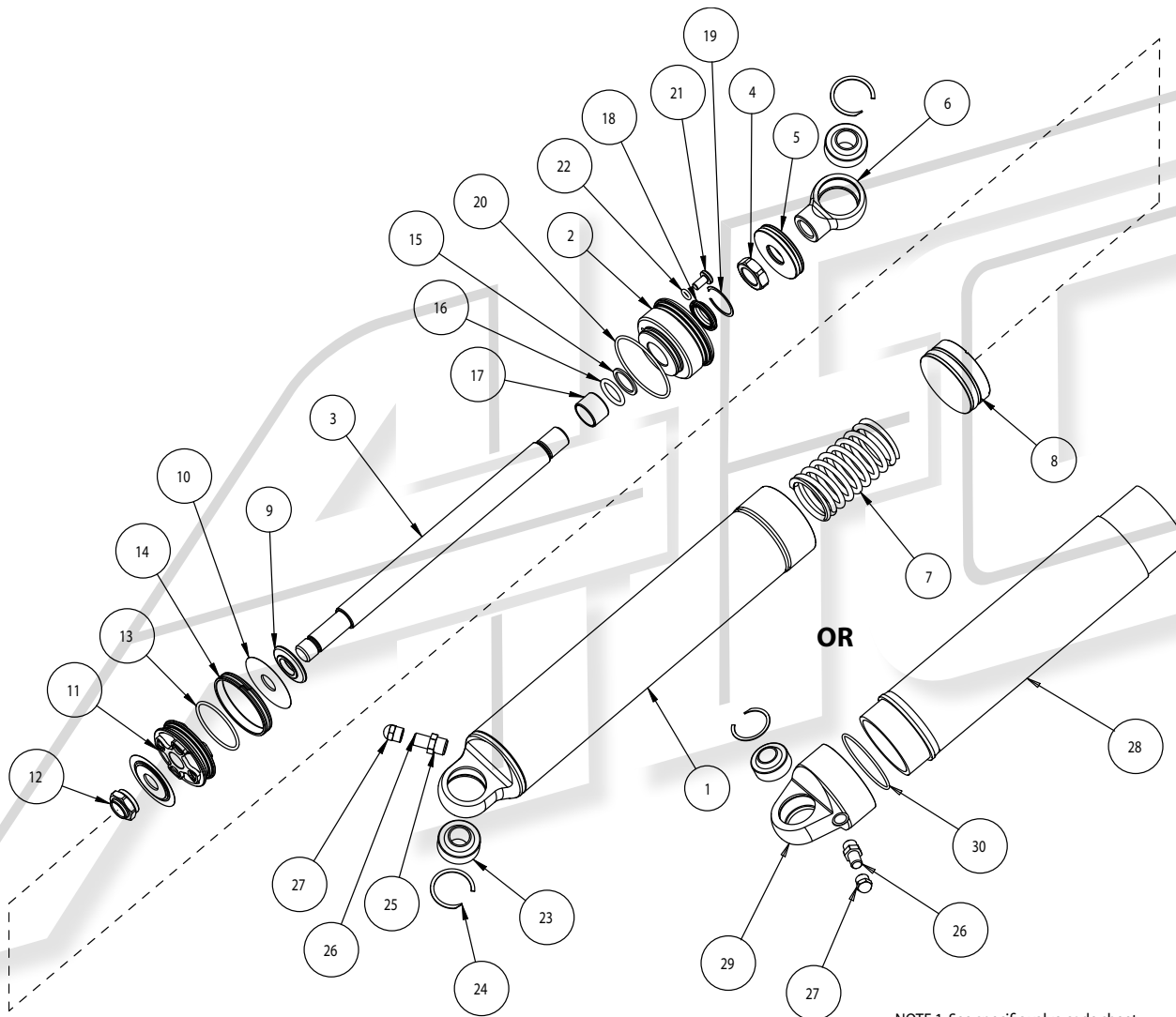


gas pressure mono-tube  
**Steel & Aluminum Body**

LIT XXX REV -

STEEL & ALUMINUM BODY :: MAIN EXPLODED VIEW / COMPONENT LIST



- |    |  |  |
|----|--|--|
| 1  | A550010257X<br>A550010259X                               | 7" MONOTUBE BODY ANODIZED<br>9" MONOTUBE BODY ANODIZED                           |
| 2  | A550100095X  | ROD GUIDE-ASSEMBLY   |
| 3  | A550070016X<br>A550070017X<br>A550070018X<br>A550070019X | 6" SHOCK SHAFT NA<br>7" SHOCK SHAFT NA<br>8" SHOCK SHAFT NA<br>9" SHOCK SHAFT NA |
| 4  | A550090073X  | 9/16-20 JAM NUT-SPECIAL  |
| 5  | A550090151X  | SHOCK SPRING CONE SUPPORT  |
| 6  | A550010126X  | STEEL STD ROD END  |
| 7  | A550090193X  | SPRING (CANNOT BE USED WITH 7" OR 9" SHAFT)                                      |
| 8  | MT59106  | FLOATING PISTON  |
| 9  | A550090146X  | STOP WASHER  |
| 10 | SHIM_STACK   | SEE VALVE CODE CHARTS  |
| 11 | A550010022X<br>A550090086X<br>A550090172X                | SHOCK PISTON-STD<br>PISTON-POPPET STYLE<br>PISTON-DOUBLE POPPET STYLE            |
| 12 | A550090012X  | 1/2-20 NUT SPECIAL   |
| 13 | A550060021X  | O-RING PISTON BAND SEALING   |
| 14 | A550060026X  | PISTON BAND  |
| 15 | SOLD AS PART OF ITEM #2 A550100095                       |  |
| 16 | SOLD AS PART OF ITEM #2 A550100095                       |  |
| 17 | SOLD AS PART OF ITEM #2 A550100095                       |  |
| 18 | SOLD AS PART OF ITEM #2 A550100095                       |  |
| 19 | SOLD AS PART OF ITEM #2 A550100095                       |  |
| 20 | SOLD AS PART OF ITEM #2 A550100095                       |  |
| 21 | SOLD AS PART OF ITEM #2 A550100095                       |  |
| 22 | SOLD AS PART OF ITEM #2 A550100095                       |  |
| 23 | 1081X  | BEARING-SHOCK STD 1/2" ID  |
| 24 | 1070X-1  | BEARING RETAINING CLIP   |
| 25 | SOLD AS PART OF #26                                      |  |
| 26 | A550090037X  | SCHRADER VALVE-O-RING STYLE PORT   |
| 27 | MT59080-1  | SCHRADER VALVE CAP   |
| 28 | MT31110A<br>MT31111A                                     | 7" MONOTUBE BODY ANODIZED<br>9" MONOTUBE BODY ANODIZED                           |
| 29 | MT31112A   | END CAP-MONOTUBE SHOCK BODY  |
| 30 | A550060021X  | O-RING PISTON BAND SEALING   |

NOTE 1: See specific valve code sheet for shim part numbers and sequence