

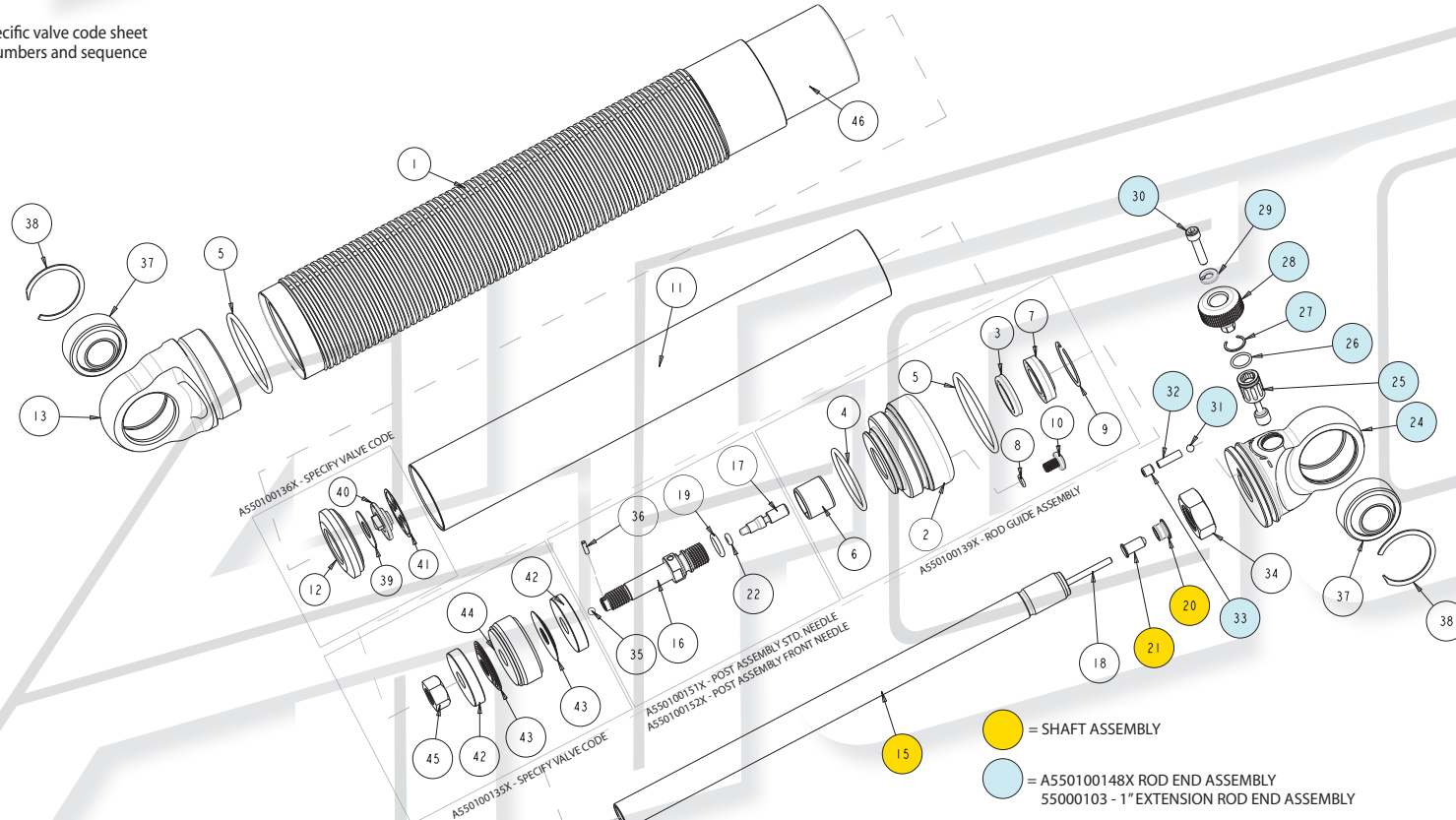
16 Series

16 Series Single-Adjustable

LIT 503 REV E

16 SERIES MAIN EXPLODED VIEW / COMPONENT LIST

NOTE 1: See specific valve code sheet for shim part numbers and sequence



1	A550010316X	6" SMOOTH RESERVE TUBE
	A550010326X	6" THREADED RESERVE TUBE
	A550010317X	7" SMOOTH RESERVE TUBE
	A550010327X	7" THREADED RESERVE TUBE
	A550010318X	8" SMOOTH RESERVE TUBE
	A550010328X	8" THREADED RESERVE TUBE
	A550010319X	9" SMOOTH RESERVE TUBE
	A550010329X	9" THREADED RESERVE TUBE
2	A550010180X	ROD GUIDE, SMALL TWIN TUBE
3	150X13	SEAL, QUAD 0.500"
4	150X3	O-RING, 2-023 NBR
5	150X4	O-RING, 2mm X 35mm NBR
6	A901040004X	BUSHING TU SMALL BODY
7	A550060056X	SCRAPER, H-0500 NBR
8	A550060022X	O-RING 5-148
9	A550090059X	RETAINING RING 13/16

10	A550090039X	SCREW TAMPER PROOF 8-32
11	SK1006-6	6" PRESSURE TUBE
	SK1011-7	7" PRESSURE TUBE
	SK1014-8	8" PRESSURE TUBE
	SK1012-9	9" PRESSURE TUBE
12		CYLINDER END - SEE VALVE CODE
13	A550010320X	ENDCAP SMALL TWIN TUBE
15	A550070126X	6" SM BODY ADJ SHAFT
	A550070127X	7" SM BODY ADJ SHAFT
	A550070128X	8" SM BODY ADJ SHAFT
	A550070129X	9" SM BODY ADJ SHAFT
16	A550010360X	SEAT, ADJ SM BODY SHAFT
17	A550030019X	NEEDLE TIP SMALL BODY STD.
17A	A550030025X	NEEDLE TIP FRONT
18	A550070116X	6" METERING ROD
	A550070117X	7" METERING ROD

	A550070118X	8" METERING ROD
	A550070119X	9" METERING ROD
19	A550060015X	O-RING 011
20	A550090175X	ADJ NEEDLE RETENTION BUSHING
21	A550030024X	REBOUND NEEDLE TIP W/LIP
22	A550060057X	O-RING 2-004 NBR
24	A550010340X	ROD END, SHORT ADJ.
25	A550010132X	ADJ. SCREW, SHORT ROD END
26	A550060047X	O-RING, 5-698
27	A901080007X	RETAINING RING, 0.375 BORE
28	A550040020X	KNOB, SHORT ROD END
29	A901070006X	WASHER #6 SS
30	A901060022X	SHCS 6-32 X 5/8 SS
31	A550090167X	BALL, 0.125 CHROME STEEL
32	A550090168X	SPRING 0.125 DIA. X 0.438
33	A901060018X	SET SCREW, 8-32 X 0.188

34	A550090221X	JAM NUT 1/2-20
35	A550090167X	BALL, 0.125 CHROME STEEL
36	A901080013X	ROLL PIN 1/16 X 1/4
37	A901040009X	BEARING, 0.50 ID X 0.63W
38	1070X-1	BEARING CLIP
39	SM BV SHIM	SHIM - SEE VALVE CODE
40	SM INTAKE VLV	INTAKE VALVE - SEE VALVE CODE
41	SK1002	SPRING CLIP
42	A55009021-X	WASHER, STOP SB TT 5MM - SEE VALVE CODE
43	SHIM STACK 30MM	GENERIC 30mm SHIM STACK - SEE VALVE CODE
44	PISTON 30MM	30mm SHOCK PISTON - SEE VALVE CODE
45	A550090220X	NUT, 5/16-24 SB TT
46	SK1008	GAS BAG SMALL BODY

● = SHAFT ASSEMBLY
 ● = A550100148X ROD END ASSEMBLY
 ● = 55000103 - 1" EXTENSION ROD END ASSEMBLY